

## WHAT TO EXPECT AT THE POLLS

Polls will be open on election day from 7 a.m. until 7 p.m. you will be asked to show photo and signature identification when you go to the polls to vote.

Acceptable forms of identification:

- Florida Driver's License
- Florida Identification Card issued by the Department of Highway Safety and Motor Vehicles
- United States Passport
- Debit/Credit Card
- Military Identification
- Student Identification
- Retirement Center identification
- Neighborhood Association Identification
- Public Assistance Identification

If your photo identification does not contain your signature, you will be required to show an additional identification that provides your signature.

### Voter's Bill of Rights

Each registered voter in this state has the right to:

1. Vote and have his or her vote accurately counted.
2. Cast a vote if he or she is in line at the official closing of the polls in that county.
3. Ask for and receive assistance in voting.
4. Receive up to two replacement ballots if he or she makes a mistake prior to the ballot being cast.
5. An explanation if his or her registration or identity is in question.
6. If his or her registration or identity is in question, cast a provisional ballot.
7. Written instructions to use when voting, and, upon request, oral instructions in voting from elections officers.
8. Vote free from coercion or intimidation by elections officers or any other person.
9. Vote on a voting system that is in working condition and that will allow votes to be accurately cast.

### Voter's Responsibilities

Each registered voter in this state should:

1. Familiarize himself or herself with the candidates and issues.
2. Maintain with the office of the Supervisor of Elections a current address.
3. Know the location of his or her polling place and its hours of operation.
4. Bring proper identification to the polling station.
5. Familiarize himself or herself with the operation of the voting equipment in his or her precinct.
6. Treat precinct workers with courtesy.
7. Respect the privacy of other voters.
8. Report any problems or violation of election laws to the Supervisor of Elections.
9. Ask questions, if needed.
10. Make sure that his or her completed ballot is correct before leaving the polling station.

NOTE TO VOTER: Failure to perform any of these responsibilities does not prohibit a voter from voting.

# VOTER GUIDE

*Liberty County*



*Gina McDowell*

Supervisor of Elections

10818 NW SR 20

PO Box 597

Bristol, FL 32321

Phone: (850) 643-5226

Website: [libertyelections.com](http://libertyelections.com)

Email: [vote@libertyelections.com](mailto:vote@libertyelections.com)

## MILITARY & OVERSEAS VOTER INFORMATION

### 2016 Elections Calendar

#### PRESIDENTIAL PREFERENCE PRIMARY

Deadline to Register - February 16, 2016

Early Voting - February 29 – March 12, 2016

Election Day - March 15, 2016

---

#### PRIMARY ELECTION

Deadline to Register - August 1, 2016

Early Voting - August 15 –27, 2016

Election Day - August 30, 2016

---

#### GENERAL ELECTION

Deadline to Register - October 11, 2016

Early Voting - October 24–November 5, 2016

Election Day - November 8, 2016

---

The polls open on Election Day from 7 a.m. to 7 p.m.

Early Voting hours are:  
8am-4pm

Military and overseas voters may apply for voter registration and/or request absentee ballots with a Federal Post Card Application (FPCA) which may be obtained from the Unit Voting Officer. An Open Voter Registration/Absentee Ballot Request (<http://www.fvap.gov/resources/media/fpca.pdf>) may also be completed, printed and signed, then mailed to the Supervisor of Elections address. You may also request an absentee ballot by phone or send a written request to the Supervisor of Elections. An absentee request made on a FPCA is good through two General Elections. Therefore, it is important that you update our office with your current mailing address in order for ballots to reach you in a timely manner. Spouses and dependents are considered to be of the same category of absentee voter as military or overseas members and generally should follow the same rules. U.S. Embassies and Consulates can assist in completing and mailing FPCA forms, absentee ballots and other election material.

#### OVERSEAS VOTERS

It is important that absentee ballots by overseas voters be received in a timely manner in order to allow adequate time for the request to be processed and the ballot sent. Absentee ballots may be requested by telephone, mail, fax or by e-mail (See below). If you are requesting your ballot by mail, fax, or e-mail the following must be included in the request:

- The name of the voter requesting the ballot,
- The voter's county of legal residence in Florida,
- Voter's date of birth,
- The election the request is for,
- One of following:
  1. if ballot is to be mailed, an APO/FPO or other deliverable overseas address  
OR
  2. if the ballot is to be faxed, a fax number with all International prefixes included where return information will be received OR
  3. if the ballot is to be transmitted by mail, you e-mail address
  4. the voters signature (fax & mail request only).

**IMPORTANT:** You can only return your ballot to the Supervisor of Elections by mail or by fax. A ballot returned by e-mail will not be accepted.

You may also use a FPCA or an Open Voter Registration/Absentee Request but be sure to indicate the method you would like your ballot delivered. If you desire the ballot be sent by e-mail, please indicate your e-mail address in the Remarks section.

Allow time for delivery depending in the country you are residing in. Please vote your ballot as soon as it arrives. **IMPORTANT:** Follow the instructions included with the ballot and return the ballot as soon as possible. If you plan to return your ballot by fax, a fax transmittal sheet is recommended. For fastest delivery, fax your ballot and certificate directly to the Supervisor of Elections office. If you fax your voted ballot, you will be voluntarily waiving your right to a secret ballot. **IMPORTANT:** We must receive your voted ballot AND your signed Voter's Certificate in order for your ballot to count. For all races on the ballot to be counted, the ballot must be received in the Election's office by 7:00 p.m. ET election day.

## ABSENTEE VOTING

**WHO CAN VOTE ABSENTEE?** All qualified voters are permitted to vote absentee under Florida law. (FS 97.021)

**HOW CAN I VOTE ABSENTEE?** A voter, or someone designated by the voter, may request an absentee ballot from the supervisor of elections, by mail (see request form on website) or by telephone. This request will be good for two election cycles. The person requesting an absentee ballot must disclose:

1. The name of the voter for whom the ballot is requested;
2. The voter's address;
3. The voter's date of birth;
4. The requestor's name;
5. The requestor's address;
6. The requestor's driver license number, if available;
7. The requestor's relationship to the voter and,
8. The requestor's signature (written request only).

For an absentee ballot to be mailed, the request must be made on or before the 6th day prior to the election.

A designee may pick up an absentee ballot for a voter on election day or 5 days prior to election day. A designee may only pick up two absentee ballots per election, other than his or her own ballot or ballots for members of his or her immediate family. Designees must have written authorization from the voter, present a picture I.D. , and sign an affidavit.

Marked ballots that you wish to have counted must be mailed or hand-delivered to the Supervisor of Elections' office no later than 7 p.m. on the day of the election. Do not return your voted ballot to a polling place.

If you have obtained an absentee ballot but want to vote in your precinct on Election Day, you must take the absentee ballot with you to the polls, whether or not it has been marked so that it can be cancelled. However, if you are unable to return the ballot, you may vote a provisional ballot.

You may track the status of your absentee ballot at <http://elections.myflorida.com> or on your Supervisor of Elections' website. (FS 101.62 & 101.69)

## PROVISIONAL BALLOT

If your eligibility to vote cannot be determined, or you do not have the proper identification, you will be allowed to vote a provisional ballot. A person casting a provisional ballot has the right to present written evidence supporting his or her eligibility to vote to the Supervisor of Elections by no later than 5 p.m. on the second day following the elections. If you voted a provisional ballot solely because you did not bring photo and signature identification to the polls, you do not have to present further evidence of eligibility.

New legislation now requires voters who attempt to change their address from another county into Liberty County on election day must now vote a provisional ballot. Therefore. It is important to make these changes prior to election day if you wish to vote a regular ballot.

## VOTER REGISTRATION INFORMATION

**WHO CAN REGISTER TO VOTE ?** To register and vote, you must be 18 yrs of age, a citizen of the United States of America and a legal resident of Florida and of the county where you intend to vote. A person who is otherwise qualified may pre-register on or after that person's 16th birthday and may vote in any election held on or after that person's 18th birthday. (FS 97.041)

**WHEN CAN YOU REGISTER?** You can apply to vote at any time by mail or in person. However the registration books will close on the 29th day before each election and will remain closed until after the election. When the books are closed for an election, voter registration and party changes will be accepted, but will be processed after that election. (FS 97.053 & 97.055)

**HOW DO I REGISTER?** To register to vote, you must fill out a voter registration application form. Voter registration applications are available at the Supervisor of Elections' office, Supervisors website, DMV offices and state agencies that provide public assistance. You may also pick up a registration form at public locations such as:

Bristol & Hosford Post Offices

Harrell Memorial Library, Bristol

Thompson's Store, Hosford

Sumatra Grocery, Sumatra

Completed forms must be returned to the Supervisor of Elections office. You can also register or make changes to your registration by going to our website at [www.libertyelections.com](http://www.libertyelections.com) and go to Voter Registration. Click on the Register online link. Complete the application, print, sign, and mail to the address below. (FS 97.053)

**FIRST-TIME VOTERS WHO REGISTER BY MAIL:** If you registered by mail and you are a first-time voter in the county and you have not been issued a Florida I.D. Number., Florida Driver License Number or Social Security Number you are required to provide additional identification. To assure that you will not have problems when you go to vote, you should provide a copy of the required identification at the time you mail your voter registration form. If you are voting an absentee ballot, you must provide the proper identification prior to 7 p.m. election day or your absentee ballot will not count, you must provide a copy of a photo identification as outlined in WHAT TO EXPECT AT THE POLLS or you may provide a copy of a current and valid utility bill, bank statement, government paycheck, or other government document containing your name and current residence address. (FS 97.0535)

## EARLY VOTING

Voters now have the opportunity to vote before election day on the regular voting equipment. Early voting is offered at the office of the Supervisor of Elections prior to election day. Please see the Election Calendar for the early voting dates. The office will also be open for 2 Saturdays during that time. (FS 101.657)

## IS YOUR VOTER'S REGISTRATION CURRENT?

**HAVE YOU MOVED SINCE THE LAST ELECTION?** Florida law states that you must vote in the precinct where you live. Notify the elections office if you change your address within the county. If you move to another county in Florida, send a completed voter registration application with your new address to the Supervisor of Elections of the new county. (FS 97.1031 & 101.045)

**DO YOU WISH TO CHANGE YOUR PARTY?** You must provide to the Supervisor of Elections office a complete and signed voter registration application. To make your party change effective for a primary election, a party change must be made 29 days prior to a primary election. (FS 97.1031 & 101.045)

**HAS YOUR NAME CHANGED?** You will need to fill out a new registration form so that your correct name will appear in the precinct register. (FS 97.1031 & 101.045)

**DO YOU NEED TO UPDATE YOUR SIGNATURE?** It is very important for you to keep your signature current with the Supervisor of Elections. Signatures on your registration record are used to verify signatures on petitions and on provisional and absentee ballots. If your signature do not match, your petition or ballot will not count. Signature updates for provisional and absentee ballot verification purpose must be provided no later than the start of the canvassing of absentee ballots, which occurs on election. To update a signature, provide the Supervisor of Elections with a voter registration application indicating a signature update. (FS 98.077)

## PRIMARY ELECTIONS

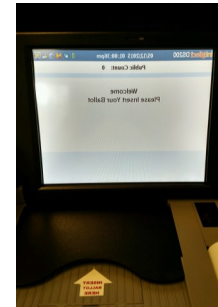
Florida is a closed primary state. That means that only voters who are registered members of political parties may vote for their respective party's candidates in a primary election. However, Article VI, Section 5(b), Florida Constitution, provides that if all candidates have the same party affiliation and the winner will have no opposition in the general election, all qualified voters, regardless of party affiliation, may vote in the primary election for that office. This is known as a Universal Primary Contest.

Nonpartisan judicial and school board offices, nonpartisan special districts, and local referendum questions are included in some primary elections. All registered voters, including those without party affiliation are entitled to receive and vote these ballots. If no candidate for such office receives a majority of the votes cast for such office in the primary election, the names of the two candidates receiving the highest number of votes for such office shall be placed on the general election ballot.

## HOW TO MAKE YOUR VOTE COUNT

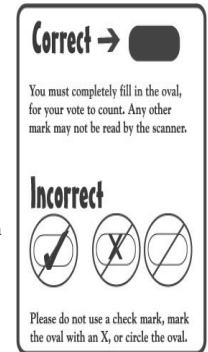
Your DS200 voting system uses an optical scanner to read your ballot.

### DS200



### HOW TO MARK YOUR BALLOT

- Mark your ballot with a black pen.
- Mark only one choice per race. (Unless indicated otherwise).
- If you make a mistake on your ballot, return to poll worker for another ballot.



### AutoMARK



The ES&S AutoMARK voter assist terminal does not count or store votes; rather, it is a ballot-marking system designed to provide privacy and accessibility to voters who are blind, vision impaired, or have a disability or condition that would make it difficult or impossible to mark a ballot. Even a temporary condition, such as a broken arm, could make it difficult for a person to mark a ballot.

You can place your ballot in the machine, after the system accepts the ballot, the system will provide instructions on how to vote the ballot. In order to make the ballot easier to read, you can change the contrast and font size. You can mark your choice by touching the screen or by using the keypad, which features written and Braille markings.

The AutoMARK system will confirm your selections on the screen and by audio. After you verify that your selections are correct, the system will fill in your choices on the ballot and print the ballot. You will then place your ballot in the M100 for tabulation.